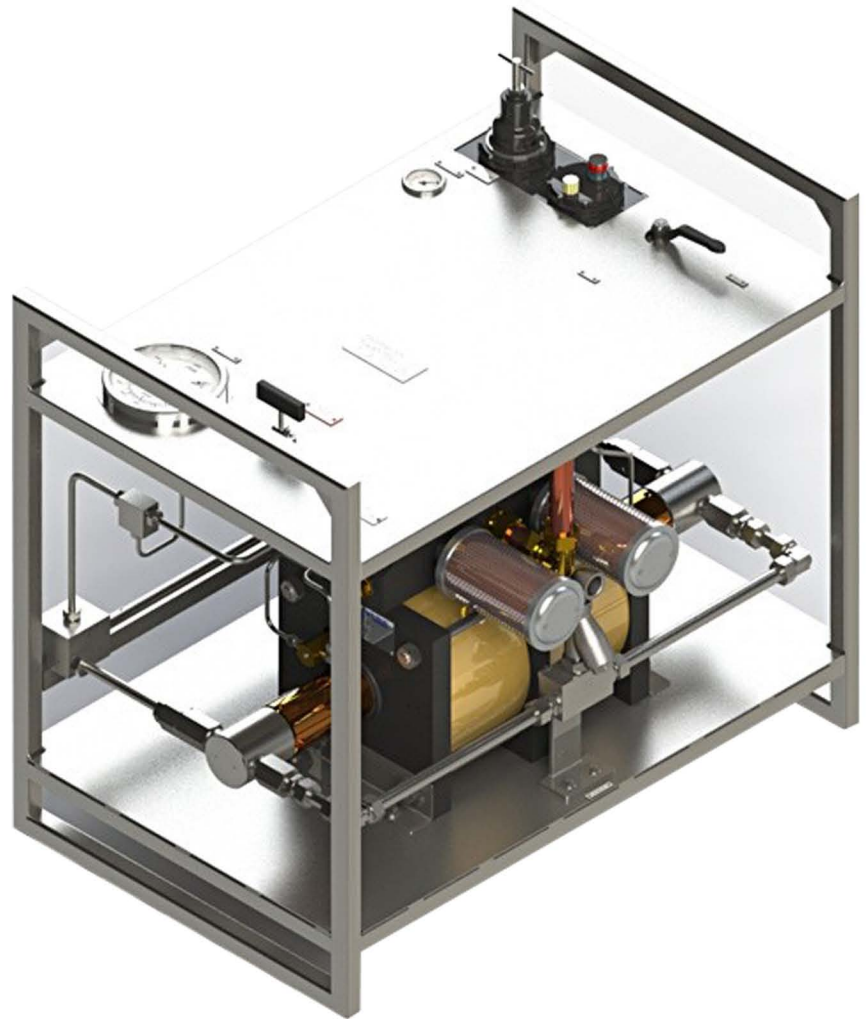


GLYCOL INJECTION UNIT (GIU)

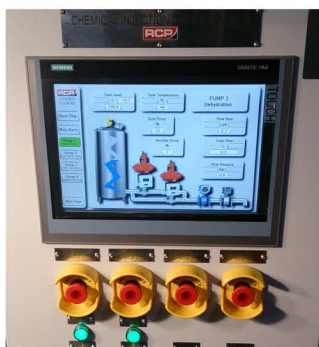
The RCP supplied Glycol Injection Unit (GIU) utilises a proven air operated Double Head Dual Acting (DHDA) pump to produce a high pressure liquid flow of up to 1.9 litres per minute at 21000psi.

The DHDA pump has been specified to deliver an infinitely variable flowrate and pressure control, GIU equipment is easily integrated into RCP's High pressure temperature monitoring equipment for automatic control of glycol injection in emergency situations.

The DHDA pump offers a proven low maintenance, highly reliable solution for any critical injection process, with the ability to stall at a predetermined pressure and hold this fixed pressure without consuming power or generating heat. The pump is one of the most advanced and robust on the market.



- For installation in hazardous areas
- Easy integration with RCP control equipment



Chemical Injection Units are available with integrated HMI touchscreen control to monitor and control the process of injection while displaying and recording the sensor data.

