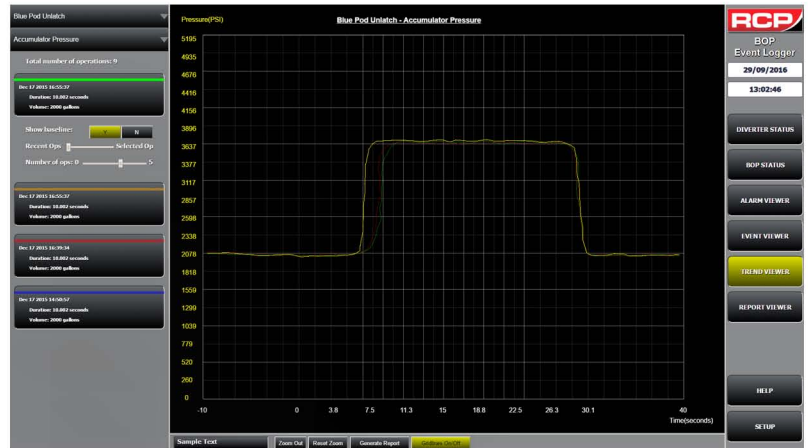


DATA ACQUISITION SYSTEM

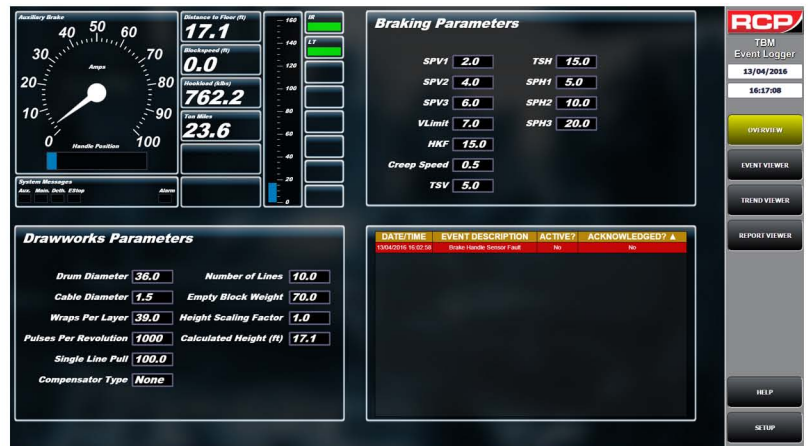
The RCP BOP E-Log System is primarily designed to operate as a critical function logger. In addition, the system will continuously monitor system sensors in order to determine and display the current state of the control equipment.

The system is also capable of providing real time playback of valve functions, which can be used to further analyse specific BOP RAM functions and identify any issues.



Benefits:

- Replacement BOP parts can be identified early, reducing the risk of downtime due to component failure
- Equipment performance viewed by a wider audience via remote access
- Early detection of faults and decreased equipment efficiency
- Verifiable account of BOP and control system testing
- Verifiable account of BOP and control system performance
- Predictive maintenance greatly improved using the E-Log system
- Increased BOP reliability



A range of reports can be generated including:

- Function test validation
- Log of BOP operations
- Digital, analogue and data inputs
- Health Status
- Activity Log
- Cycle counts of each RAM / valve

